



Signal Conditioning 101

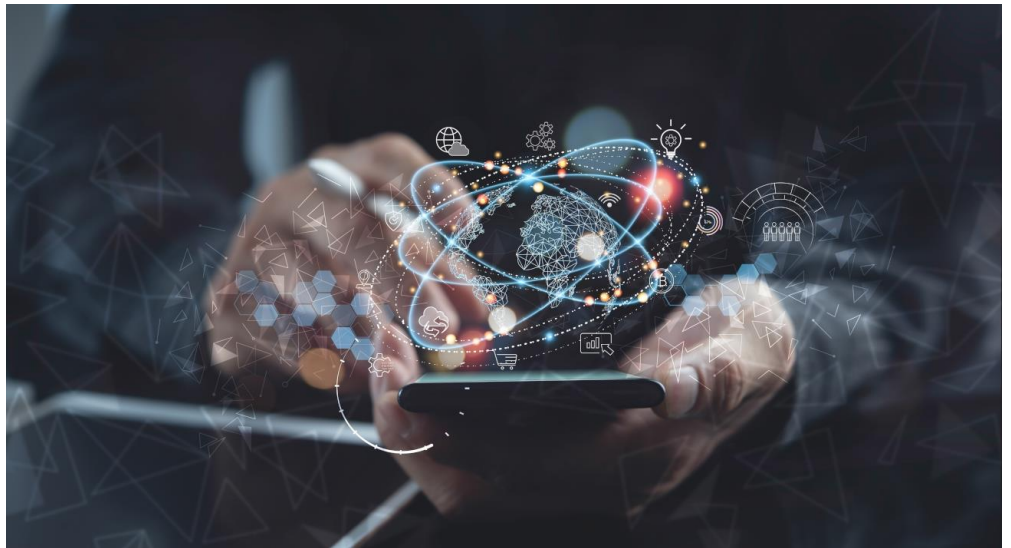
Practical Front End Strategies
for Real-World Deployments

Enhancing SDR
Performance in
Open-Air
Environments:
Practical Front
End Strategies
for Real-World
Deployments

Introduction

Software Defined Radios (SDRs) offer unmatched flexibility and adaptability, making them indispensable tools in wireless research, prototyping, and deployment. As SDRs evolve to support higher frequencies and more demanding applications, the challenges of real-world, open-air operation become more apparent.

This white paper explores practical strategies to maintain signal integrity and performance in these environments. We present signal conditioning techniques and front end enhancements that illustrate how modern SDR platforms can be engineered for robust over-the-air (OTA) deployments.



Discover how to overcome the challenges of over-the-air deployments with practical signal conditioning strategies and front end design techniques that preserve integrity and elevate performance in demanding wireless environments.

From Lab to Field

SDRs provide a reconfigurable platform for transmitting and receiving signals across a wide range of frequency bands, modulation types, and other operating conditions. In controlled laboratory environments, these platforms enable rapid development and experimentation without the need for extensive analog hardware. However, transitioning from benchtop prototypes with cabled test setups to real-world OTA systems introduces new variables—unpredictable interference, environmental noise, and signal degradation—that must be addressed to ensure reliable performance.

The allure of a direct "antenna-to-bits" architecture, wherein minimal analog circuitry separates the antenna from the digital processing chain, grows stronger as converters and programmable logic extend into the GHz range. Yet this vision, while technically compelling, remains constrained by real-world limitations in semiconductor technology and RF system design.

Challenges of Open-Air SDR Operation

In open-air and field environments, SDR performance can be severely impacted by:

- Out-of-band interference
- Uncontrolled noise sources
- Dynamic signal levels
- Multi-path propagation
- Spectrum crowding

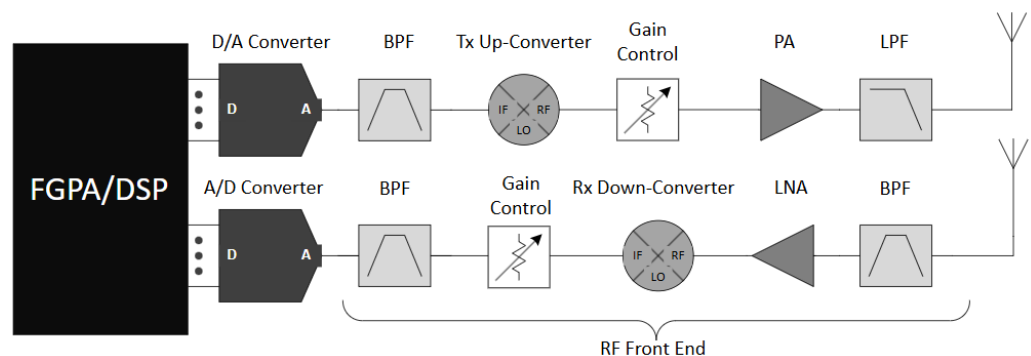
These issues can degrade operating range, introduce spurious signals, and reduce communication reliability—especially as operating frequencies climb into the millimeter-wave regime.

To maintain signal integrity and performance, signal conditioning is key. This includes amplifiers to boost signals, programmable attenuators to manage levels, and filter banks to block interference. Mixers and LOs enable frequency conversion, AGC maintains optimal range, and shielding and isolation improve robustness in noisy environments.

The Role of Front End Signal Conditioning

To address these challenges, external signal conditioning becomes a practical necessity. A robust SDR front end often includes:

- **Amplifiers**
Extend communication range by increasing transmit power or improving low-level signal detection.
- **Programmable Attenuators**
Dynamically manage gain and suppress spurious emissions, especially in waveforms with high peak to average power requiring transmit backoff.
- **Filter Banks**
Selectively pass desired frequency bands while rejecting out-of-band signals, reducing receiver blocking and desensitization.
- **Mixers and Local Oscillators (LOs)**
Enable frequency translation to and from intermediate frequencies (IF), facilitating operation across wide frequency spans.
- **Automatic Gain Control (AGC)**
Adjust receiver sensitivity in real time to adapt to varying signal conditions, common in mobility applications.
- **Shielding and Isolation**
Reduce susceptibility to external electromagnetic interference and improve system stability.



Example USRP X410 SDR with SC2430 Signal Conditioning Module



Robust front-end signal conditioning—through amplification, filtering, gain control, and frequency translation—is essential for extending SDR performance beyond the lab and into real-world environments.

Amplifiers

Amplifiers increase signal strength either in the transmitter to boost range or in the receiver to improve sensitivity. Low-noise amplifiers (LNAs) are particularly important in receive paths, where they help elevate weak signals above the noise floor without introducing significant noise contribution. On the transmit side, power amplifiers ensure sufficient output power to meet link budget requirements, especially in outdoor or long-range applications.

Programmable Attenuators

Programmable attenuators allow for dynamic control of signal levels, enabling the SDR to maintain optimal operating conditions despite variations in input strength or system gain. They are especially useful in managing transmitter output to reduce spurious emissions and prevent receiver saturation. By incorporating software-adjustable attenuation, systems can adapt in real time to changing RF environments.

Filter Banks

Filters are essential for controlling spectral content and preventing interference. Bandpass or band-selective filter banks allow the SDR to isolate desired frequencies while rejecting adjacent or out-of-band signals that could otherwise cause receiver blocking or desensitization. Switching between filters enables multiband operation and compliance with spectral emission masks across different standards.

Mixers and Local Oscillators (LOs)

Mixers and their associated LOs provide frequency translation, allowing the system to upconvert or downconvert signals between RF and intermediate frequencies (IF) at the SDR interface. This flexibility is particularly valuable in wideband SDR systems, where a single transceiver may need to operate across multiple bands. Well-isolated and stable LO generation also contributes to low phase noise and improved signal fidelity. Phase coherent LOs should be considered in multiple input, multiple output (MIMO) applications.

Shielding and isolation enhances system stability and predictability under field conditions.

Automatic Gain Control (AGC)

AGC systems dynamically adjust receiver gain to maintain a consistent signal level at the analog-to-digital converter (ADC) input. This prevents overloading active stages in the system during strong signals and preserves dynamic range when signals are weak. An effective AGC system improves receiver performance in fluctuating environments, such as mobile or urban scenarios with varying path losses.

Shielding and Isolation

Electromagnetic shielding and physical isolation reduce the effects of external interference and internal crosstalk. Especially in compact SDR platforms, where digital and RF components are densely packed, proper shielding ensures clean signal paths and prevents unwanted coupling between high-speed digital circuits and sensitive analog front ends. This enhances system stability and predictability under field conditions.

Advances in Integration and SoM Platforms

Modern System-on-Module (SoM) platforms now integrate high-speed converters and FPGAs capable of handling RF signals up to 18 GHz. This level of integration reduces system footprint and power consumption, bringing the "antenna-to-bits" ideal closer to reality.

However, these systems often still require front end augmentation to:

- Meet regulatory and standards-based requirements (e.g., 3GPP for 5G)
- Achieve sufficient linearity, dynamic range, or output power
- Adapt to band-specific performance needs



How SignalCraft Can Help

SDRs represent a powerful foundation for modern wireless systems. Yet, the transition from lab environments to real-world deployments requires deliberate attention to front end design. Practical enhancements—such as filtering, amplification, and frequency conversion—are essential to unlocking full performance in the field.

With the continued evolution of SoM technologies and high-speed RF components, the line between digital and analog signal domains continues to blur. However, until the "antenna-to-bits" ideal becomes fully practical, thoughtful signal conditioning and robust front end architectures remain essential for maximizing the potential of SDR platforms in open-air environments.

Pushing SDRs further—because at SignalCraft, performance matters.

Learn More About SCT's SDR Front Ends at www.signalcraft.com

About SignalCraft Technologies

We design and deliver expertly engineered high frequency digital and RF products—developed from the ground up to meet your specs, your schedule, and your performance expectations. Alongside our lineup of proven off-the-shelf solutions, we support everything from global test brands to industrial startups. Technical leaders choose us as their trusted wireless development partner—because performance matters.